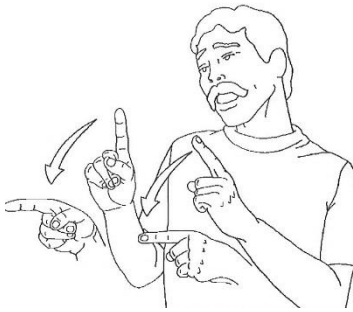
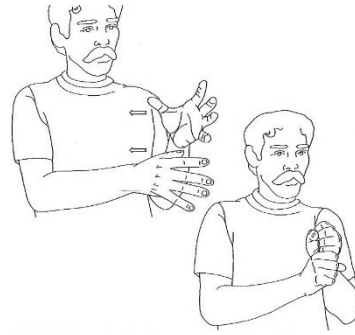


Sign Language – April 2017



GO

Both "1" hands bend at the wrists and point in the direction one is going.



GET

The "5" hands are held palms facing inward, one hand above the other. Both hands close as they move toward the body.



SHARE

The flat base hand is vertical with the thumb extended upward. The flat action hand is also vertical and slides back and forth across the index finger of the base hand.



HELP

Both flat hands pat the chest.
(This sign is used with younger children and is not an ASL sign.)



GIRL

The thumb draws a line from the jaw to the chin.



BOY

The hand closes to a flat "O" at the forehead, as if grabbing a cap.

from **SIGN with your BABY** ~ Dr. Joseph Garcia

